

Managed PoE Switches

Eagle Eye Managed PoE switches are industry standard highly reliable PoE switches designed to seamlessly integrate with the Eagle Eye Security Camera VMS.

FASTER INSTALLATIONS

Eagle Eye managed switches will give you faster installations, easier maintenance and upgrades, reduced service calls, and better visibility into camera operations.

DESIGNED FOR VIDEO

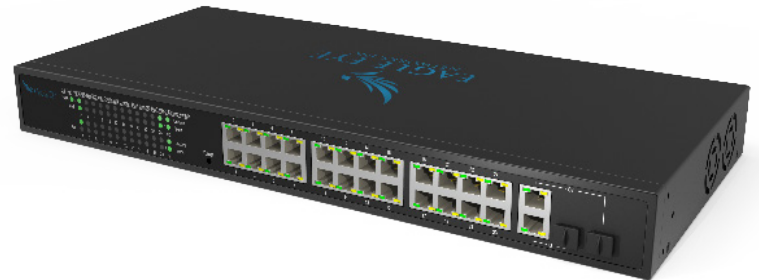
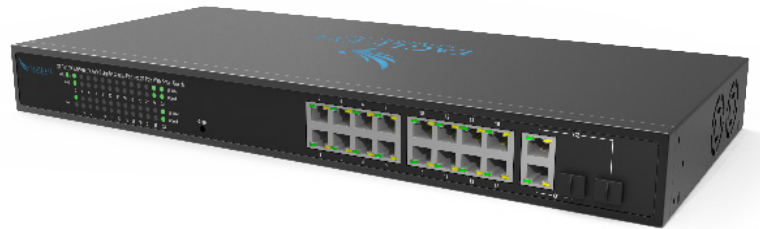
The Eagle Eye managed switches were designed specifically for video surveillance. These switches do not require any configuration - they work right out of the box. Advance features include Bandwidth control, Remote PoE Power management and Statistics Counter. Plug them in and they're ready to go.

REMOTE CONFIGURATION

The Eagle Eye managed switches will provide manageability and more functionality, allowing for remote configuration and management. Authorized users will be able to power cycle an individual PoE camera or the entire switch remotely so there is no need to send service personnel to reboot or restart cameras.

ADVANCED FUNCTIONALITY

- Reports the status of each port
- Configured to use either DHCP or a static IP address
- Power can be turned on and off for each port
- Reports for network traffic information for each port
- Measures current PoE power draw for each PoE port
- Enables web management on a port by port basis



SW05m
SW10m
SW18m
SW26m

MODEL	EN-SW05m-001	EN-SW10m-001	EN-SW18m-001	EN-SW26m-001
Total Number of Ports	5 ports (4 PoE, 1 Uplink)	10 ports (8 PoE, 2 Uplink)	18 ports (16 PoE, 2 Uplink)	26 ports (24 PoE, 2 Uplink)
PoE Ports	4 PoE	8 PoE	16 PoE	24 PoE
Uplink Ports	1 Uplink	2 Uplink +1 Gig Combo +1 Gig SFP Uplink	2 Uplink +2 Gig Combo Uplink	2 Uplink +2 Gig Combo Uplink
Power Supply	External Power Supply	External Power Supply	Built-In Power Supply	Built-In Power Supply
Voltage Range	AC100-240V	AC100-240V	AC100-240V	AC100-240V
Maximum Power Budget	60W	125W	250W	370W
Speed	10/100Mbps	10/100Mbps	10/100Mbps	10/100Mbps
Dimension (L x W x H)	119 x 85 x 28 mm 4.7 x 3.3 x 1.1 in	218 x 107 x 29 mm 8.6 x 4.2 x 1.1 in	440 x 200 x 44 mm 17.3 x 7.9 x 1.7 in	440 x 200 x 44 mm 17.3 x 7.9 x 1.7 in
Switching Capacity	1G	5.6G	7.2G	8.8G
MAC Address	2K MAC address table	4K MAC address table	4K MAC address table	4K MAC address table
Temperature Range	-10 - 55° C 14 - 131° F	0 - 40° C 32 - 104° F	0 - 40° C 32 - 104° F	0 - 40° C 32 - 104° F
Storage Temperature	-40 - 70° C -40 - 158° F	-40 - 70° C -40 - 158° F	-40 - 70° C -40 - 158° F	-40 - 70° C -40 - 158° F
PoE Specifications	802.3af & 802.3at	802.3af & 802.3at	802.3af & 802.3at	802.3af & 802.3at